

# **LOGSTOR** Installation instructions

## PertFlextra - Diffusion protection at couplings



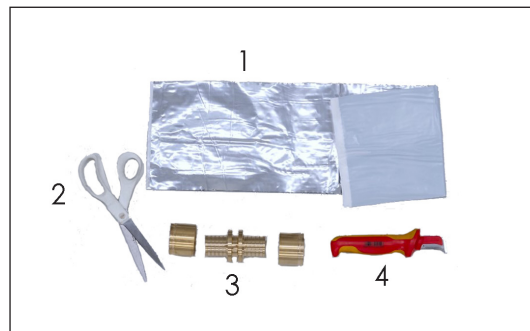


# Installation Instructions

## PertFlextra - Diffusion Protection at Couplings

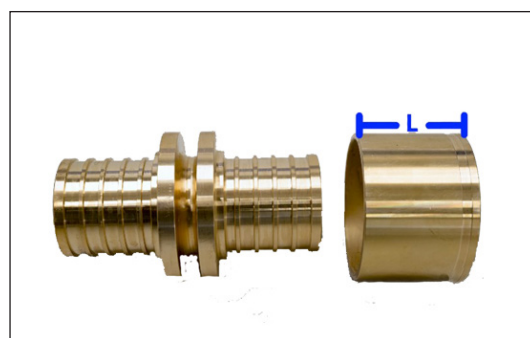
### Materials

1. Alu-wrap
2. Scissors
3. Press coupling
4. The protection layer remover for removal of protection layer and aluminium diffusion barrier from PE-RT pipes

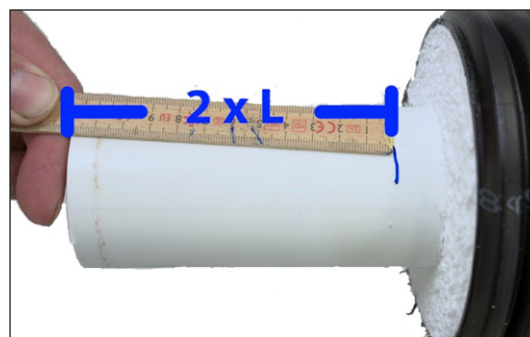


### L measurement

Measure the length (L) of the press ring.



Multiply the length (L) by 2 and mark the length ( $2 \times L$ ) on the pipe.



### Removing the protection layer and aluminium diffusion barrier

Remove the protection layer and aluminium diffusion barrier up to the marking with the protection layer remover.

They can be removed in several ways. However, it is essential that the safe protection layer remover is used, so the PE-RT pipe is not scratched.



## Installation Instructions

### PertFlextra - Diffusion Protection at Couplings

---

**Removing the protection layer and aluminium diffusion barrier, continued**



The inner pipe as well as the transition to the protection layer remain.



**Installing press ring**

Insert the press ring on the pipe.

Note! The text on the press ring must face the foam side.



## Installation Instructions

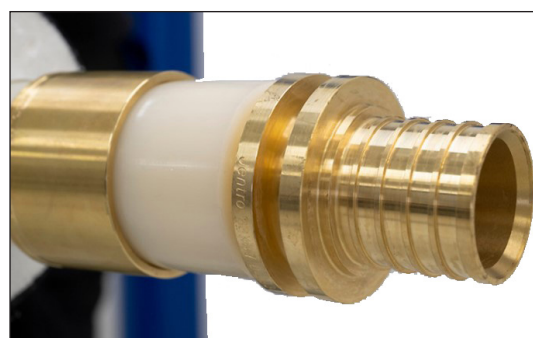
### PertFlextra - Diffusion Protection at Couplings

#### Expanding the pipe end

Expand the pipe with the expansion tool for Jentro couplings.

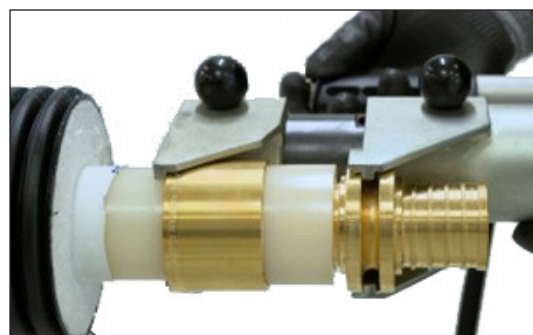


Immediately after, insert the supporting bush into the pipe end.



#### Pressing the coupling

Using the press tool for Jentro couplings the press ring and supporting bush are pressed tightly together.



Repeat the process at the other pipe end.





## Installation Instructions

### PertFlextra - Diffusion Protection at Couplings

#### Installing alu-wrap

Now measure the length of the alu-wraps.

The length must equal the pipe circumference + an overlap of minimum 20 mm.



Clean the entire area with alcohol before installing the alu-wraps.



Place the first alu-wrap over the protection layer and the coupling.



The second alu-wrap is placed on the opposite protection layer and the first alu-wrap.

Creases in the alu-wrap are squeezed out.



## Installation Instructions

### PertFlextra - Diffusion Protection at Couplings

#### Installing alu-wrap, continued

Sealing of the coupling area is complete.

The area is now ready for installation of a casing joint.



In connection with press coupling tee place the alu-wrap, so its is in contact with the branch, so the press ring is completely sealed.



Illustration of press coupling tee, wrapped in alu-wrap.



---

# Contact details

---

## Denmark

LOGSTOR Denmark Holding ApS  
Danmarksvej 11 | DK-9670 Løgstør

T: +45 99 66 10 00  
E: [logstor@kingspan.com](mailto:logstor@kingspan.com)



For the product offering in other markets please contact your local sales representative or visit [www.logstor.com](http://www.logstor.com)

Care has been taken to ensure that the contents of this publication are accurate, but Kingspan Limited and its subsidiary companies do not accept responsibility for errors or for information that is found to be misleading. Suggestions for, or description of, the end use or application of products or methods of working are for information only and Kingspan Limited and its subsidiaries accept no liability in respect thereof.

To ensure you are viewing the most recent and accurate product information, please scan the QR code directly above.

